



Eddie Hanks

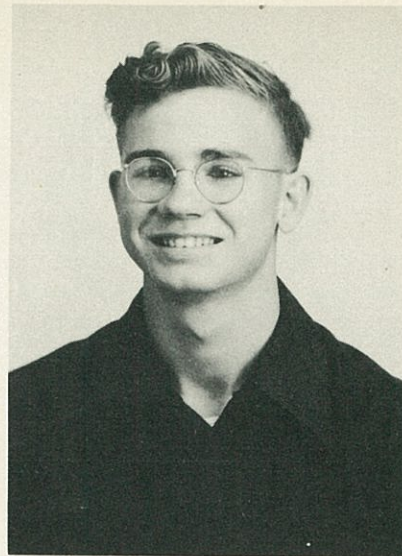
Football--'46-'47-'48-'49  
Basketball--'46-'48-'49  
Track--'46-'47  
Band--'45-'46-'47-'48-'49  
Class President--Senior Class  
Co-Editor--The Cat's Paw-  
'48-'49  
Glee Club--  
Senior National Honor Society



Wanda Whitten

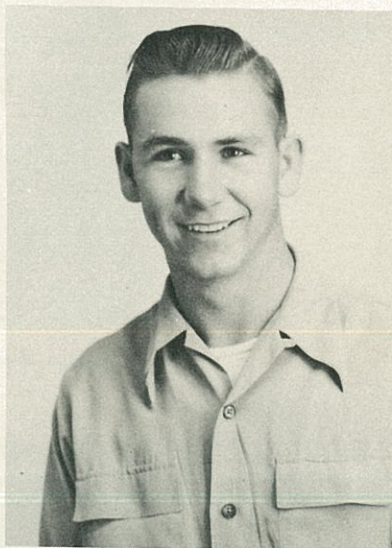
Band--'45-'46-'47-'48-'49  
Glee Club--'45-'47-'48  
Junior National Honor Society  
Senior National Honor Society  
Band Secretary--'49  
Society Ed.--The Cat's Paw-'49  
Annual Staff--'48-'49  
Girls' Trio--'47-'48-'49

W  
H  
O,  
S  
W  
H  
O



William Ammons

Band--'45-'46-'47-'48-'49  
Band Treasurer--'48  
Band President--'49  
Senior Class Bus. Mgr.--'48  
Tennis-'48  
Junior National Honor Society  
Senior National Honor Society



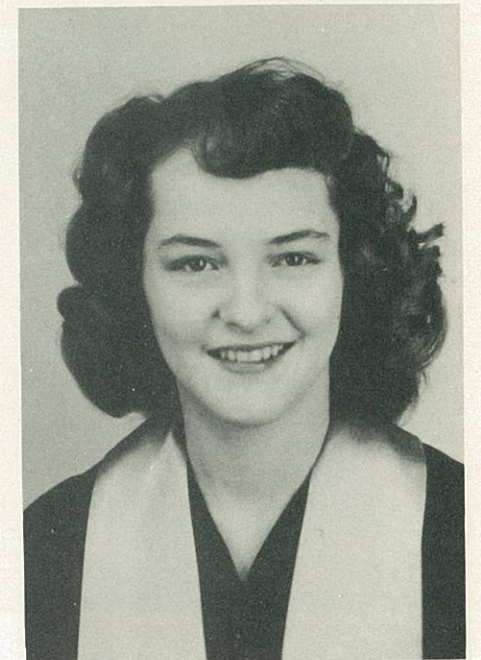
Jimmy Cook

Tennis--'46-'47-'48-'49  
Basketball-'45-'46  
Football--'45-'46-'47-'48-'49  
Band--'46-'47-'48  
Annual Staff--'49  
Class Secretary--'46  
Class Treasurer--'47  
Junior Class Bus. Mgr.--'48

# GLEE CLUB



Violet Claiborn  
Director



Clavel Strickland  
Accompanist

## CHRISTMAS PAGEANT

